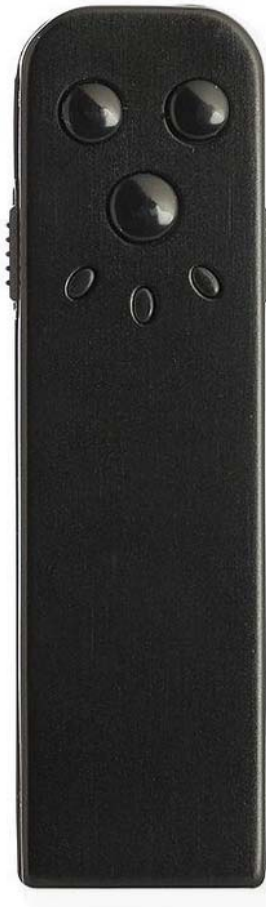


iSpy Pocket Cam

Users Guide



All information and instructions included in this Users Guide are current as of November 2020. However, due to the fluid nature of advancing technology, some characteristics may change or need modifications in the future. Should you encounter any problems or have any further questions about your product, please visit our website www.ElectroFlip.com and contact us. For faster DIY service visit our FAQ: help.ElectroFlip.com or reach us at chat.ElectroFlip.com for a quick chat. To download the large format PDF version of this guide visit: www.ElectroFlip.com/Guides

This document is a property of ElectroFlip LLC (www.ElectroFlip.com).
No unauthorized reproduction is allowed.

Table of Contents

KNOW YOUR DEVICE	3
Product Diagram.....	3-4
KEEP IN MIND	5
Safety Precautions.....	5
Legal Usage.....	5
GETTING STARTED	6
Charging the Device	6
Record a Video	6
Take a Photo.....	7
Record a Video by Motion Detection.....	7
Time and Date Watermark	8
Web Camera.....	9
Download and Playback Video	9
Chat Support.....	10

KNOW YOUR DEVICE

PRODUCT DIAGRAM



This document is a property of ElectroFlip LLC (www.ElectroFlip.com).
No unauthorized reproduction is allowed.



This document is a property of ElectroFlip LLC (www.ElectroFlip.com).
No unauthorized reproduction is allowed.

KEEP IN MIND

SAFETY PRECAUTIONS

Follow these guidelines when configuring or using your device. Violating these guidelines may cause harm or void the warranty of your product. Detailed instructions are provided in this manual.

Operating/Storage Temperature

For the unit to run smoothly, do not overheat or overcool the device. Follow the prescribed storage and operating temperature which is outlined in the Product Specification section. Overheating or overcooling this device can lead to electronic circuit damage.

Handling the device

Do not vibrate or shake the device violently. Do not put heavy objects on the device. Do not leave the device in direct sunlight or it may damage the internal battery.

Disassembly of the device

Please do not attempt to repair or disassemble the device. Attempting to disassemble the device can result in an electrical hazard for you and the device. If you experience problems with the device, discontinue use and contact us at ElectroFlip for assistance.

Other Chemicals

Do not use harsh chemicals, cleaning solvents or strong detergents to clean the device. Instead, use a clean and dry cloth to wipe the product (preferably microfiber). Do not paint the device as this may cause the paint to seep inside of the device and damage the internal circuitry.

LEGAL USAGE

Do not use this product for any illegal purpose or practice. Please take the time to research, learn, and follow your local, state, and federal laws. Especially the laws and regulations that govern the use of this camera device like any video camera recording device. You are solely responsible for the use for this product as well as the audio and video you record with this video camera.

GETTING STARTED

CHARGING THE DEVICE

1. **Power OFF** the camera device.
2. Using the provided **wall plug** and **USB cable**, connect them to your camera device then into your wall outlet. The camera will not charge when connected to a computers USB port. Your computer will try and turn the device into a storage device rather than charge.
3. The Blue LED will remain solid and Red LED will continue to blink while charging. We recommend charging for 3 hours to ensure a full charge.

NOTE: When the battery is low or depleted the camera will cycle blink Blue and Red and will not be responsive until powered OFF. This is your indicator a charge is required.

RECORD A VIDEO

1. First ensure the IPC / Video Switch is set to "**Video**".
2. Now switch the **Power ON**. The Red LED will illuminate, indicating standby.
3. To begin a video recording, press the bottom center black button. **Video REC Start/Stop** button.
4. The Red LED will turn off and Blue LED will blink 4 times, then turn off. It is now in Video Recording Covert Mode.
5. The device can be positioned somewhere and left alone to do its job until the battery is drained or.. You can Stop the Video Recording.
6. To **STOP**, simply press again the **Video REC Start/Stop** button. Red LED will appear and remain solid. It is now in standby mode.
7. **Power OFF** to switch OFF device.

NOTE: If you Power ON your device and leave it in standby for 60 seconds you will discover the design engineers hidden easter egg! A Christmas Light LED array. Its just a friendly reminder to never leave your device Powered ON as it will just drain the battery for no reason. It will lock out the device, you must now Power OFF and back ON to use the camera device.

TAKE A PHOTO

1. First ensure the IPC / Video Switch is set to “**Video**”.
2. Now switch the **power ON**. The Red LED will illuminate, indicating standby.
3. To begin a video recording, press the black right button. **Photo Snapshot** button.
4. The Red LED blink, each time you take a photo.
5. **Power OFF** to switch OFF device.

NOTE: If you Power ON your device and leave it in standby for 60 seconds you will discover the design engineers hidden easter egg! A Christmas Light LED array. Its just a friendly reminder to never leave your device Powered ON as it will just drain the battery for no reason. It will lock out the device, you must now Power OFF and back ON to use the camera device.

RECORD A VIDEO BY MOTION DETECTION

1. First ensure the IPC / Video Switch is set to “**Video**”.
2. Now switch the **Power ON**. The Red LED will illuminate, indicating standby.
3. To enable motion detection video recording, press the black left button. **Motion Detection Start/Stop** button.
4. The Red LED will blink 3 times, then turn off. It is now in Motion Detection Video Recording Covert Mode.
5. The device can be positioned somewhere and left alone to do its job until the battery is drained or.. You can Stop the Motion Detection Video Recording.
6. To **STOP**, simply press again the **Motion Detection Start/Stop** button. A Blue LED will appear now and remain solid. It is now in standby mode. It's Blue reminding you of the last operation it was in was Motion Detection Video Recording.
7. **Power OFF** to switch OFF device.

NOTE: If you Power ON your device and leave it in standby for 60 seconds you will discover the design engineers hidden easter egg! A Christmas Light LED array. Its just a friendly

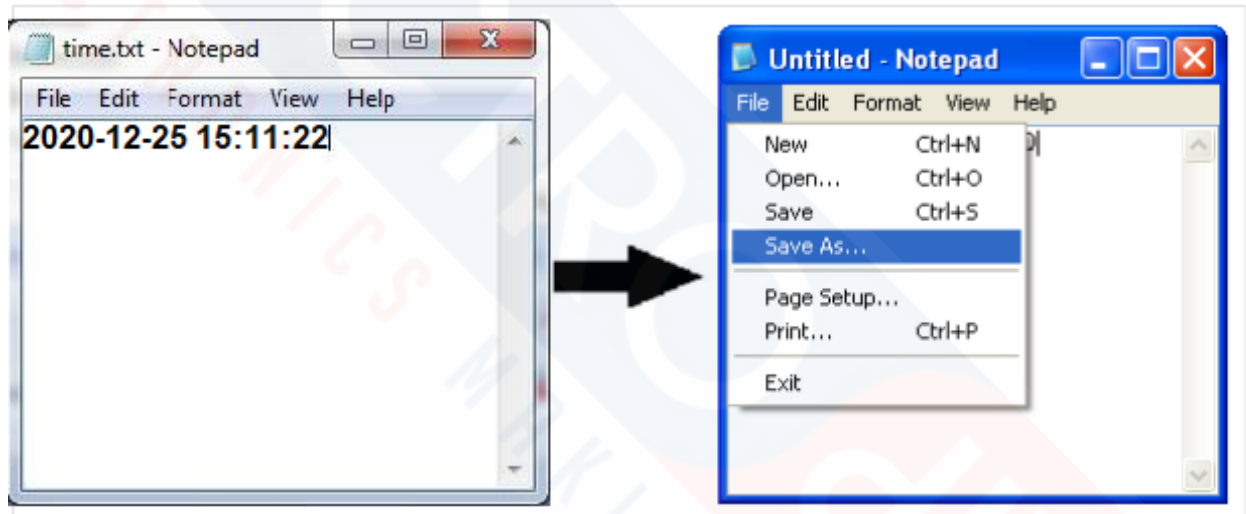
reminder to never leave your device Powered ON as it will just drain the battery for no reason. It will lock out the device, you must now Power OFF and back ON to use the camera device.

TIME AND DATE WATERMARK

To watermark the date and time on your every video and photo, follow the steps below:

1. After your first recording the camera device will have created a time.txt in its memory.
2. Connect your camera device via USB cable. Locate the new storage device your computer will prompt you. Now within this new storage device locate the file named "time.txt"
3. Open this text file and you will find that this file will have the follow formatted date/time:

2020-12-25 15:11:22



Time and Date Format is: YYYY-MM-DD HH:MM:SS (Note: Time is in military format)

Edit this date and time file without adding any new characters or spacing, just simply edit the date and time exactly as seen within the file.

4. **Save** this file. Close the notepad. Disconnect your camera from the USB cable.
5. Now **Power ON** your camera device, take a couple video clips, then **Power OFF**. Going forward now all future video clips will retain the new date/time settings.

WEB CAMERA

1. First ensure the IPC / Video Switch is set to “**IPC**”.
2. Now switch the **Power ON**. The Red LED will illuminate, indicating standby.
3. Connect the provided USB cable to your computer system USB 2.0 port. A Green LED will illuminate and Red LED will disappear then reappear and begin to blink.
4. Your camera device is now in Web Camera mode, feel free to open the video conferencing app of your choice. Zoom, Skype, Twitch, Join.me, Google Hangouts, etc.. These programs will detect your web camera.
5. The device can be positioned somewhere and left alone to do its job until the battery is drained or.. You can Stop the Video Recording.
6. To **STOP**, simply press again the **Video REC Start/Stop** button. Red LED will appear and remain solid. It is now in standby mode.
7. **Power OFF** to switch OFF device.

NOTE: You will need to use the microphone built into your computer screen, laptop, or headset, this camera device cannot use its own Microphone for web camera meetings, its specifically designed for the video recording with audio mode.

DOWNLOAD AND PLAYBACK VIDEO

1. First ensure your camera device has a **full charge**. Otherwise you could face issues during video transfer.
2. Ensure the IPC / Video Switch is set to “**Video**”.
3. Leave the Power Switch OFF.
4. Connect the provided USB cable to your computer system USB 2.0 port. A Blue LED will illuminate, and Red LED will disappear then reappear and begin to blink.
5. Your computer will automatically detect the camera device as external storage device and will assign a removable disk drive (D, E, F, etc..).
6. Locate and open the newly found removable storage device (your iSee2) and it will list folders with video files.

7. We recommend to first copy the video files to your computer's hard drive before attempting to playback video files. The USB cable is primarily intended for charging and file transfers however not for live streaming playback of video clips.
8. After you have viewed or downloaded your video files, you may keep the video files on your camera or delete the video to make room available on your camera. When complete with all transfers or deletions you may now disconnect by simply unplugging your camera from your computers USB port.

Chat Support:



(Use the camera from your mobile phone to visit chat support.)

All information and instructions included in this Users Guide are current as of November 2020. However, due to the fluid nature of advancing technology, some characteristics may change or need modifications in the future. Should you encounter any problems or have any further questions about your product, please visit our website www.ElectroFlip.com and contact us. For faster DIY service visit our FAQ: help.ElectroFlip.com or reach us at chat.ElectroFlip.com for a quick chat. To download the large format PDF version of this guide visit: www.ElectroFlip.com/Guides

This document is a property of ElectroFlip LLC (www.ElectroFlip.com).
No unauthorized reproduction is allowed.