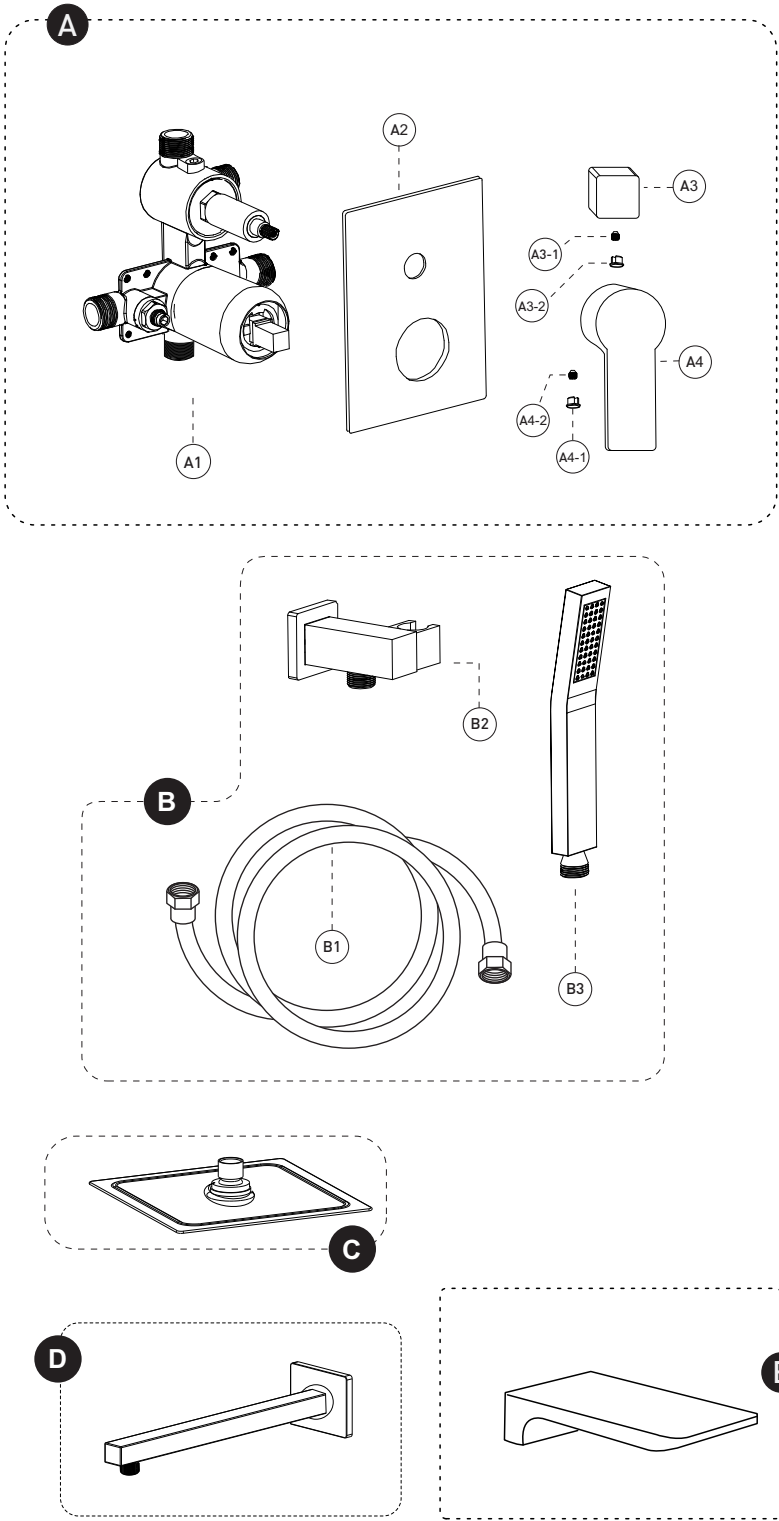
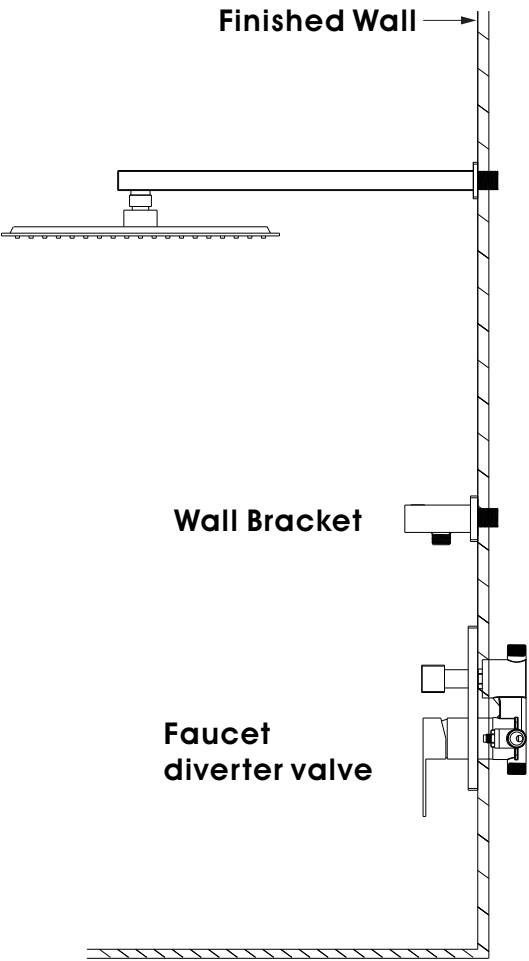


PRODUCT DRAWING



No.	Description
A	Pressure balanced diverter valve
A1	Valve
A2	Face plate with sealjoint
A3	Diverter knob kit
A3-1	Allen screw (A-3 included)
A3-2	Trim cap (A-3 included)
A4	Shower valve handle
A4-1	Trim cap (A-4 included)
A4-2	Allen screw (A-4 included)
B	Handheld Shower Kit with Flexible Hose
B1	Flexible hose
B2	Wall Bracket
B3	Handheld Shower
C	Shower head
D	Shower arm and flange kit
E	Bathtub spout
Z	Accessories Package
For Repair And Warranty (Spare Parts)	
For Installation (Spare Parts)	

SHOWER SYSTEM FAUCET

Installation instruction



MB/BN/BG/CH/ORB

CARE INSTRUCTIONS

Rinse the product with clear water. Dry the product with a soft cloth.

DO NOT:

Use abrasive cleansers, cloths, or paper towels. Use any cleaning agents containing acid, polish, wax, alcohol, ammonia, bleach, solvent or any other corrosive or harsh chemical cleansers.

INSTALLATION STEPS

! IMPORTANT

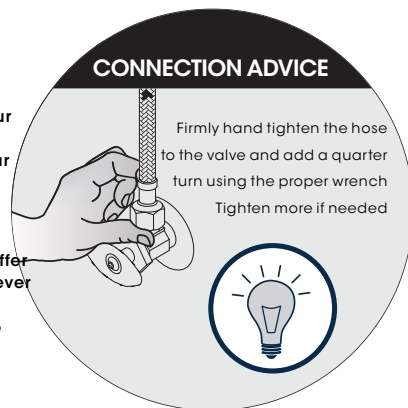
We recommends using a professional plumber for all installtion and repair. Please inform yourself about the canadian plumbing code`s regulations and your local municipality plumbing codes before installlation.the canadian plumbing code requires the installation of urge arresting devices to eliminate water hammering.allow an adequate opening in order to easily access connections or other plumbing devices for maintenance or repair.

* Apply plumber's putty under the plastic cover deck pcta to seal your installation.

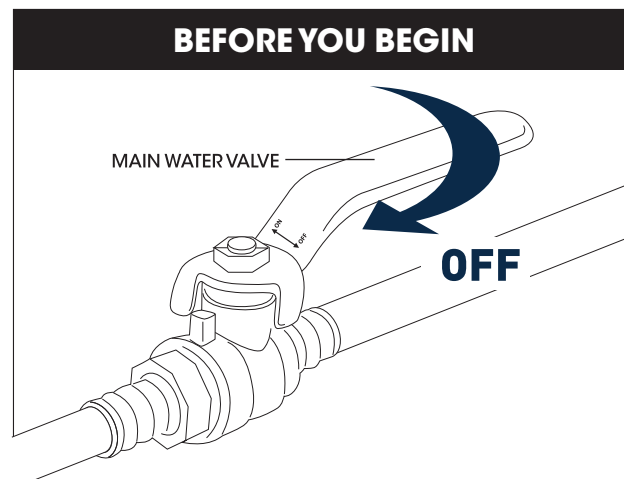
Appliquez du mastic pour plombier sous la sous-plaque de plastique pour rendre votre installation étanche.

The model shown in the installation steps may differ from the one in box however connection type and installation steps are the same.

CONNECTION ADVICE



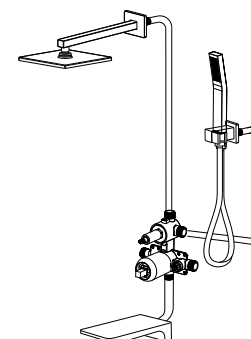
BEFORE YOU BEGIN



INSTALLATION WAY



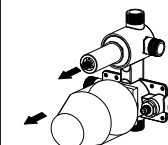
A



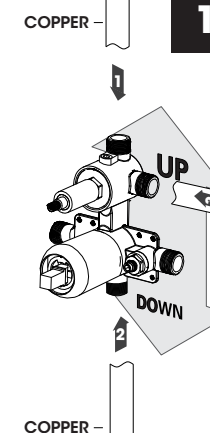
Rough-in-Installation primaire



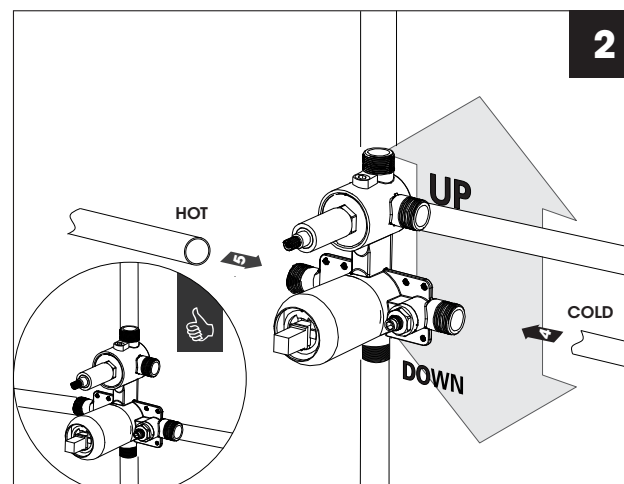
ATTENTION
WHEN USING A
HANDSHOWER,
IT NEEDS TO
BE CONNECTED
TO THE TOP
OUTLET



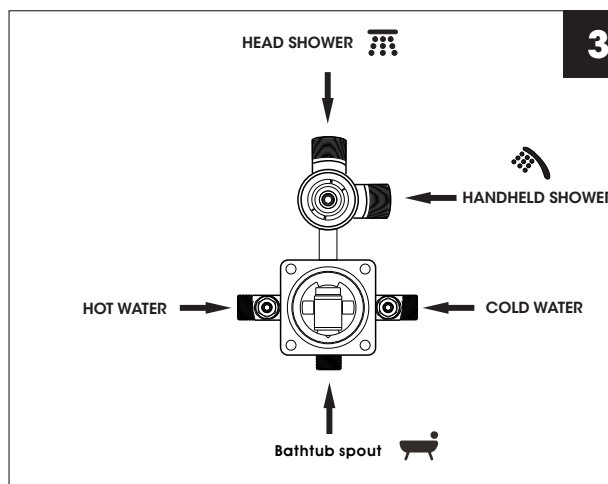
DRILLING GUIDE



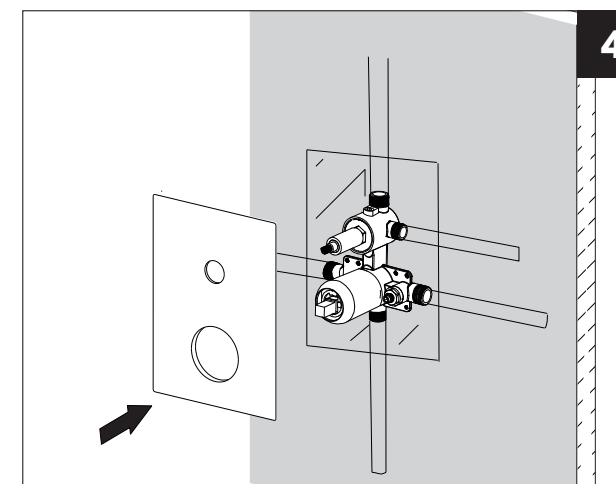
2



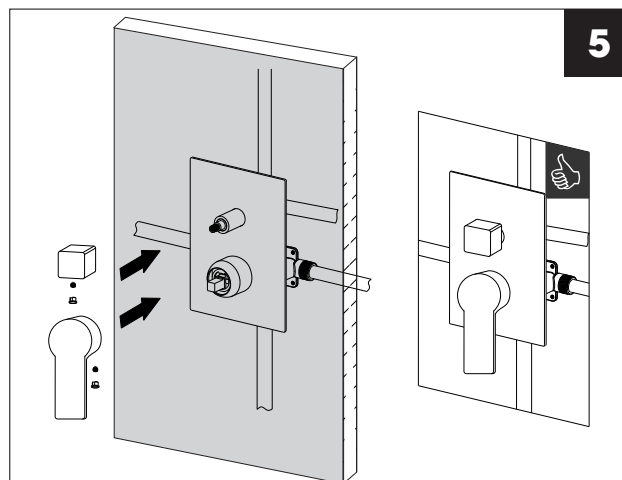
3



4

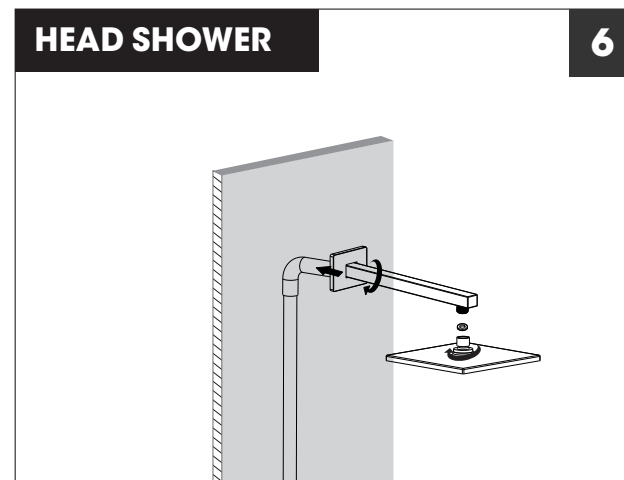


5



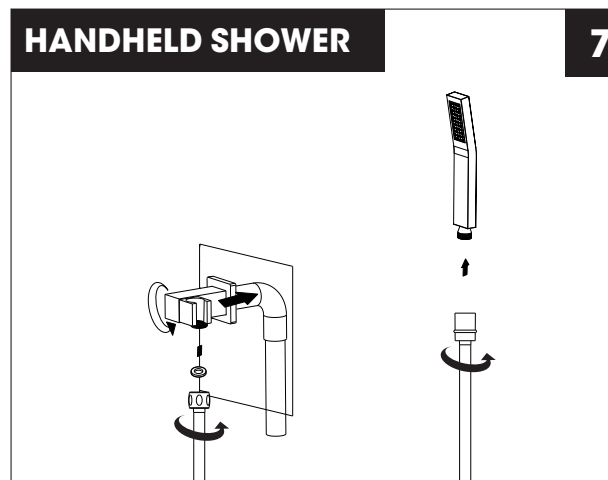
HEAD SHOWER

6



HANDHELD SHOWER

7



BATHTUB SPOUT

8

